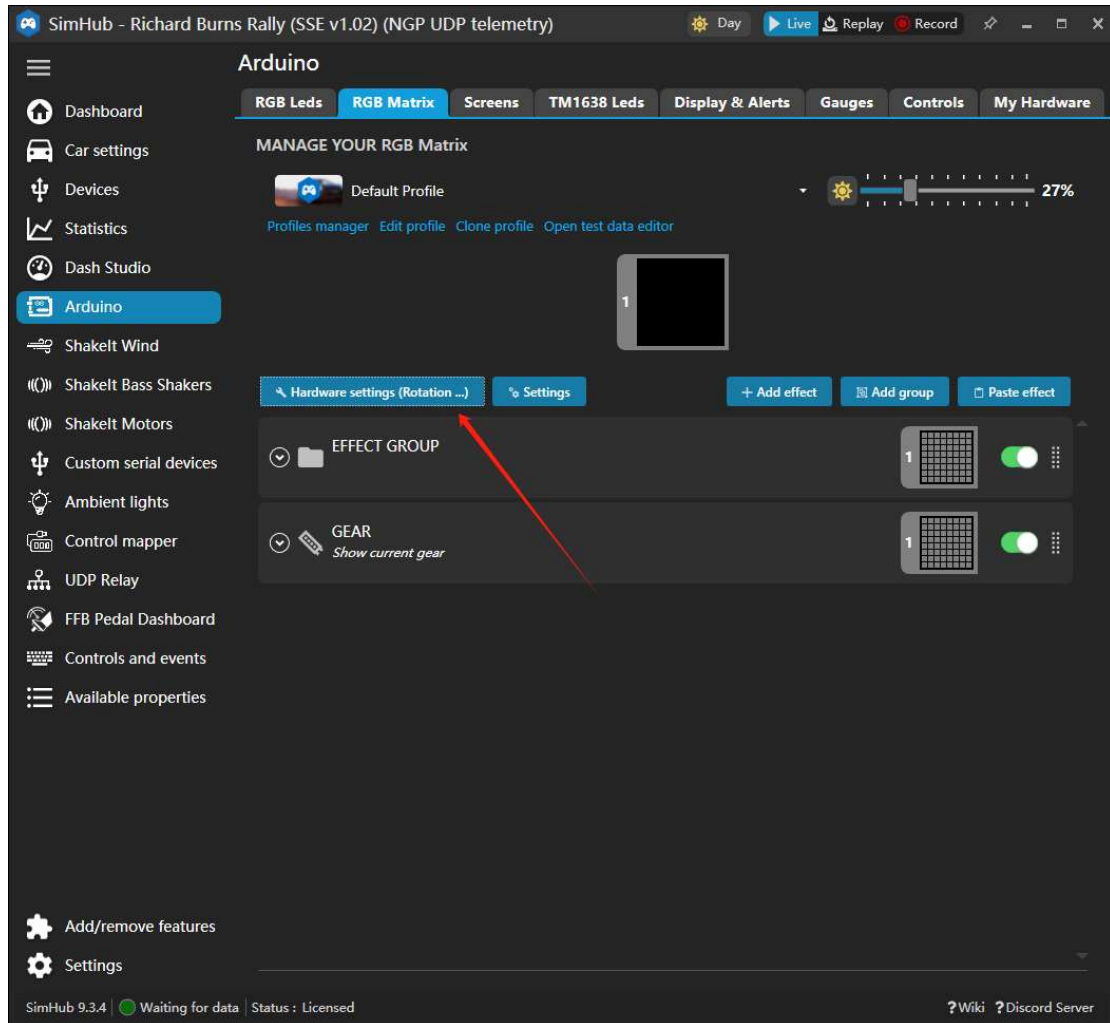


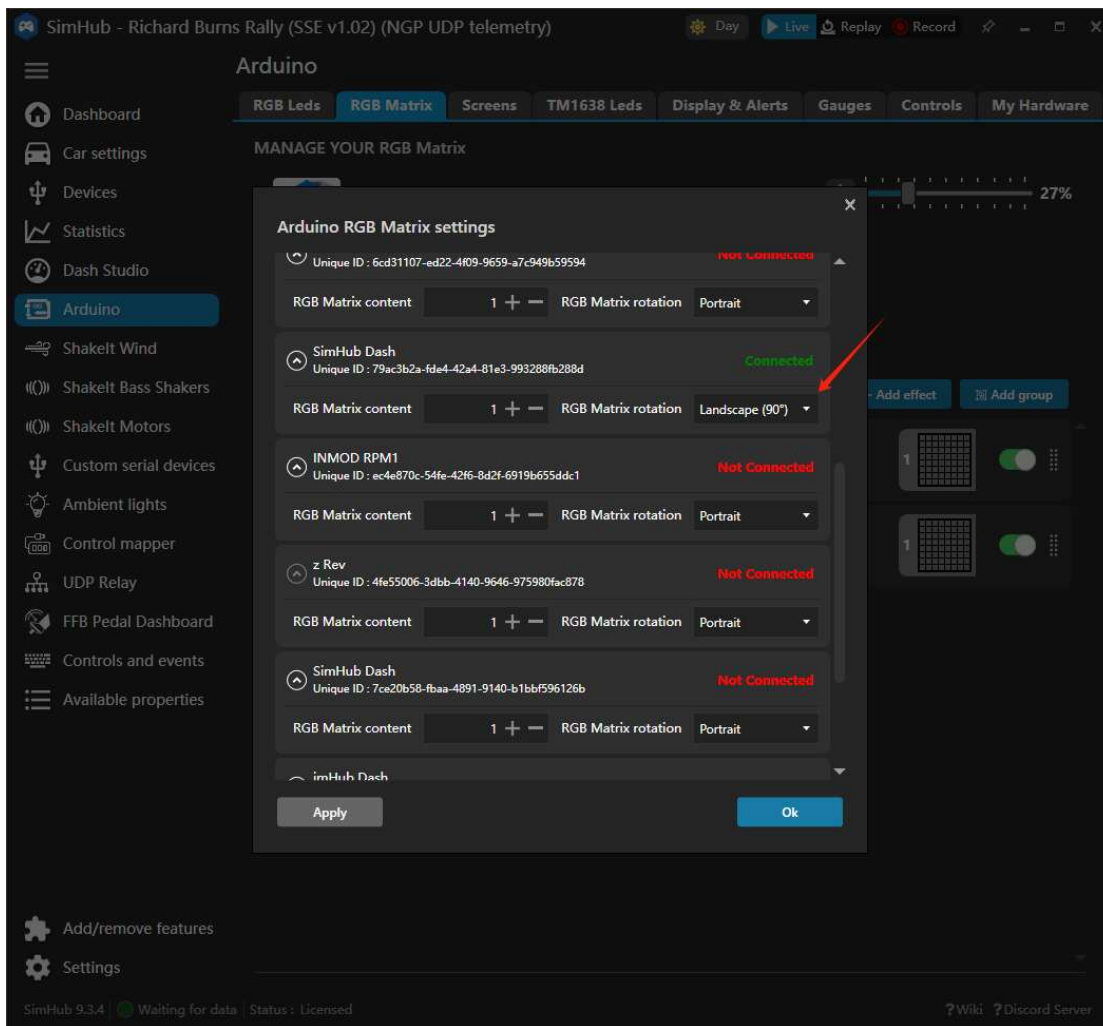
Iflag setting instruction

1, 显示方向错误, 找到对应设备 COM 端口, 旋转调整显示方向。

Need to rotate the direction of the display.

Find the corresponding COM port(shows as *connected* in green) and click RGB Matrix rotation





2, 点击 Add effect, 选择所需要的遥感数据。

Click Add effect to choose the remote sense data you want to set

SimHub - Richard Burns Rally (SSE v1.02) (NGP UDP telemetry) Day Live Replay Record

Arduino

RGB Leds RGB Matrix Screens TM1638 Leds Display & Alerts Gauges Controls My Hardware

MANAGE YOUR RGB Matrix

Default Profile 27%

Profiles manager Edit profile Clone profile Open test data editor

Hardware settings (Rotation ...) Settings + Add effect Add group

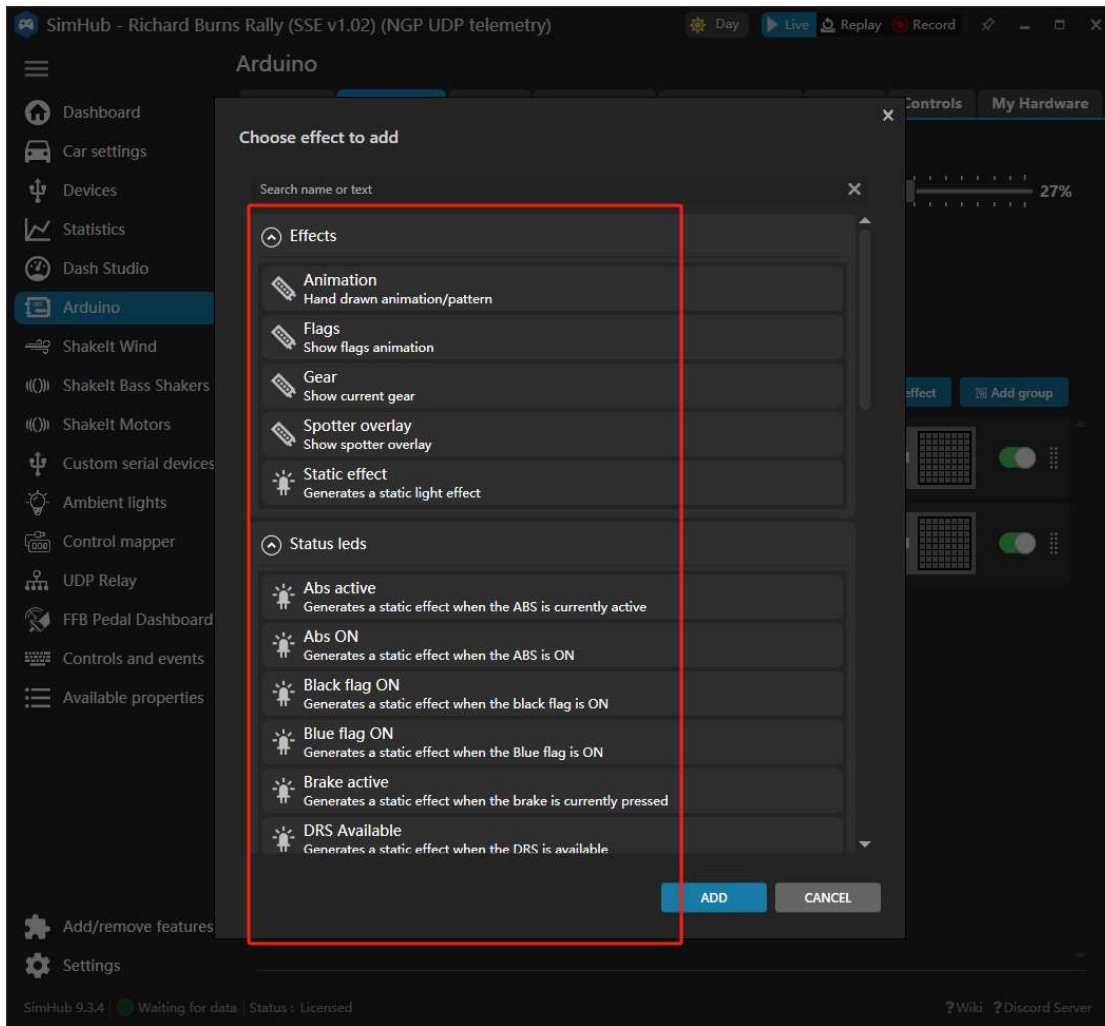
EFFECT GROUP 1

GEAR Show current gear 1

Dashboard Car settings Devices Statistics Dash Studio Arduino Shakelt Wind Shakelt Bass Shakers Shakelt Motors Custom serial devices Ambient lights Control mapper UDP Relay FFB Pedal Dashboard Controls and events Available properties

Add/remove features Settings

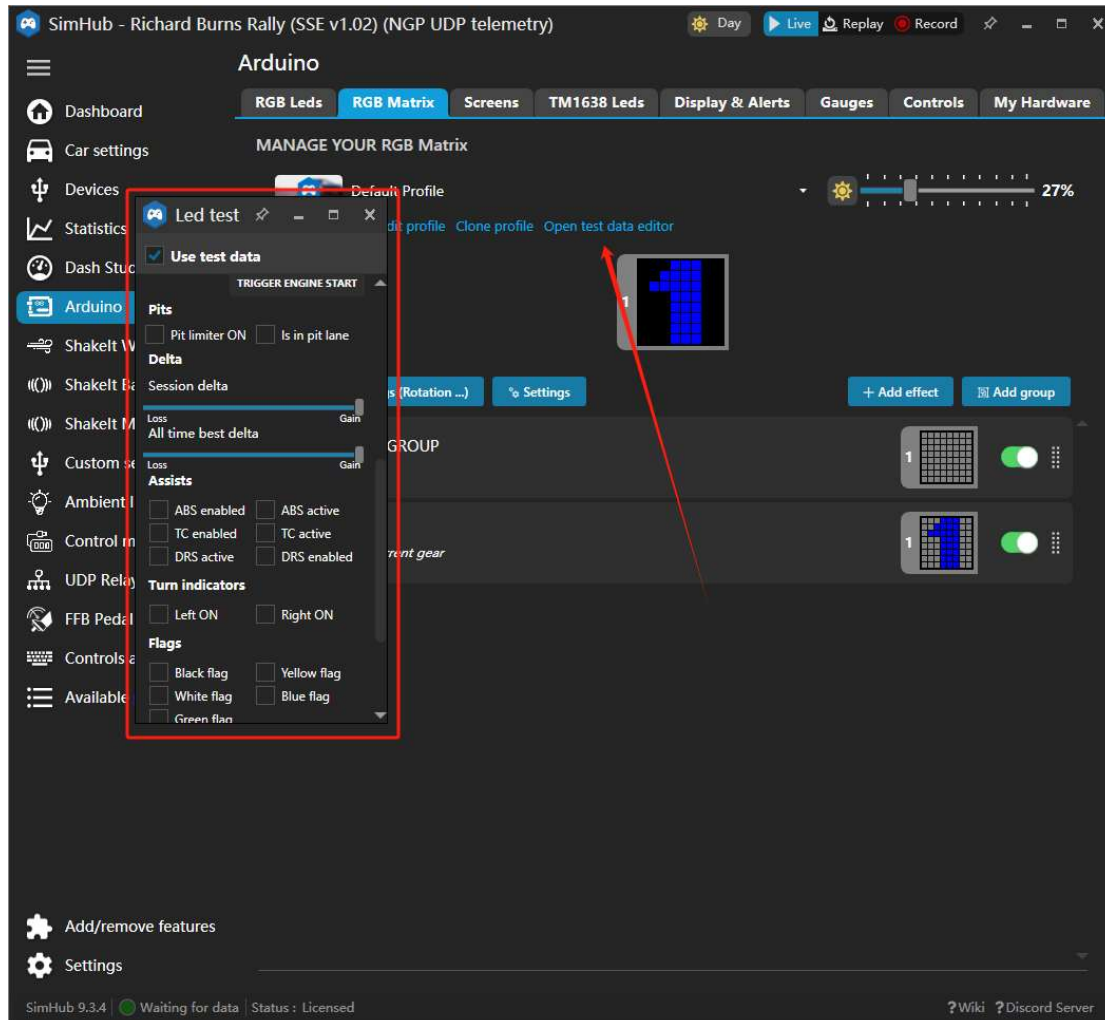
SimHub 9.3.4 | Waiting for data | Status : Licensed ? Wiki ? Discord Server



3, 点击 open test data editor 打开遥感数据测试, 勾选你对应设置的遥感数据可以检查显示效果

Click **Open test Data editor** to open the section of test for the remote sense data

Tick different boxes to check how the display looks like



4, 调节显示亮度

Adjust lightness

